

Pritzker EVOLVES

Ensuring a **V**ision **O**f **L**eading
with our **V**alues to **E**ducate
Students

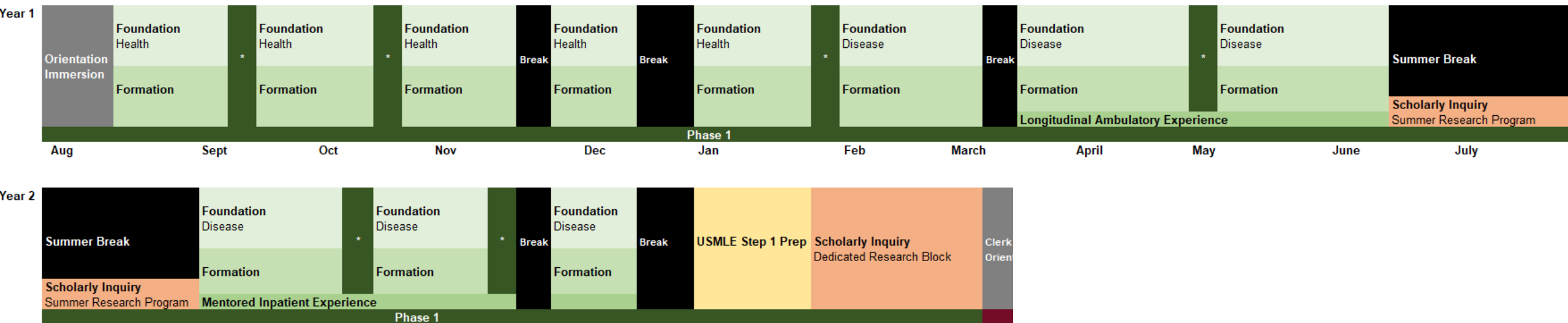
Jeanne M. Farnan, MD MHPE

Jason T. Poston, MD



Process to Date

- The **phase-based workgroups** started with the calendar for what the pre-clerkship and clerkship phases should look like
 - 3-Phase future:
 - Phase 1 (Pre-clerkship; Scientific Foundations & Professional Formation)
 - Phase 2 (Core Clinical Year; Clinical Application)
 - Phase 3 (Differentiation & Transition)
 - Curriculum reps and students who volunteered are represented on each of these workgroups
- **The CEPC (Curriculum & Educational Policy Committee)** is in charge of reviewing and approving curriculum changes
 - What we are sharing with you today is what the working groups have recommended that the CEPC has approved



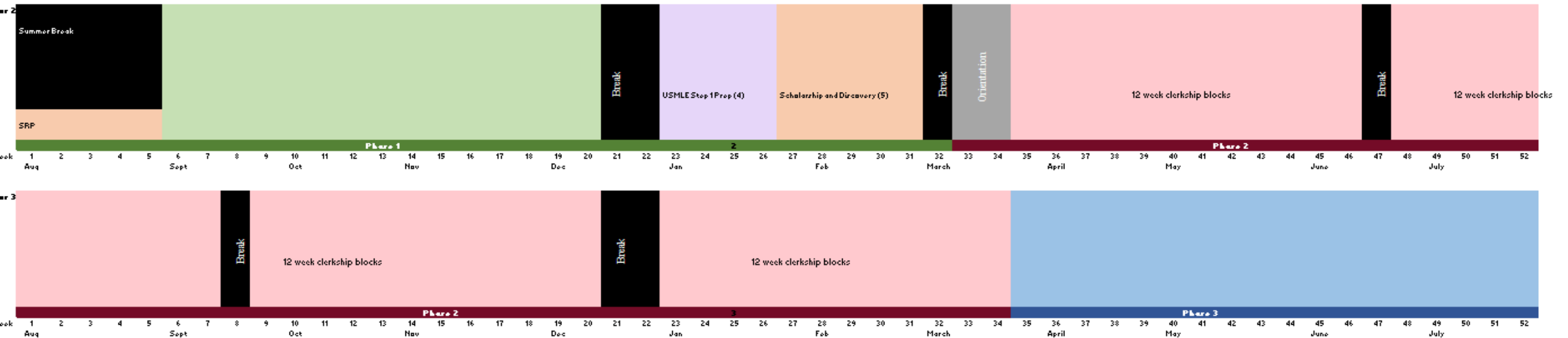
- **Some features:**

- Proposed plan includes shorter and EARLIER transition to clerkship phase which is consistent with feedback we have received from students and faculty during EVOLVES ideation phase (and consistent with other peer schools)
 - Accomplished by integration of courses (Formation/Foundation), reduction of lecture hours, and increased active learning methods
- Provides 4 weeks for USMLE Step 1 prep + vacation (2 weeks)
- Preserves Summer Research Program (SRP) and Scholarship and Discovery (S&D) Block to ensure maintenance of training grants and time for scholarly work

Phase 1 - additional details

- Longitudinal HEAR content will occur throughout Phase 1
 - Preserving immersive first phase
- Phase 1 ambulatory working group chaired by Dr. Tia Kostas
 - Longitudinal Phase 1 clinical experience
- Value-added Roles LOIs received and prepared for review
- USMLE Step 1 to be passed before entering Phase 2 curriculum
- Ongoing discussions with the MD/PhD programs to ensure integration

Phase 2 - planning



Proposed Phase 2 for new curriculum, using four 12-week blocks:

- 8 weeks Internal Medicine + 4 weeks Ambulatory (including FM)
- 8 weeks Surgery + 2 weeks Anesthesia + 2 weeks Elective
- 4 weeks Neurology + 4 weeks Psychiatry + 4 weeks Elective
- 6 weeks Ob/Gyn + 6 weeks Pediatrics

Phase 2 - additional details

- Longer and earlier clinical phase
- Required Neurology and Family Medicine experiences
- Increased elective time to facilitate career exploration
- Preserves and enhances preparation for clerkships (e.g., Clinical Biennium)

Pending Decisions

- Assessment (all phases)
- Remediation
- Structure for:
 - Value-added Roles
 - Community Engagement and Advocacy
 - Career Advising and Professional Development
- Transitional content
 - Orientation
 - Biennium

Plans for Today

- Phase 1:
 - Working groups to discuss content integration across disciplines based on pre-workshop preparation
- Phase 2:
 - Assessment planning for the future of the clerkships
 - Clinical assessment, NBME shelf examinations, etc.
- Phase 3:
 - Required activities for Phase 3
 - Return to basic science
- Career and Professional Development:
 - Will divide amongst Phase 2 and 3 to provide perspective for implications for career planning

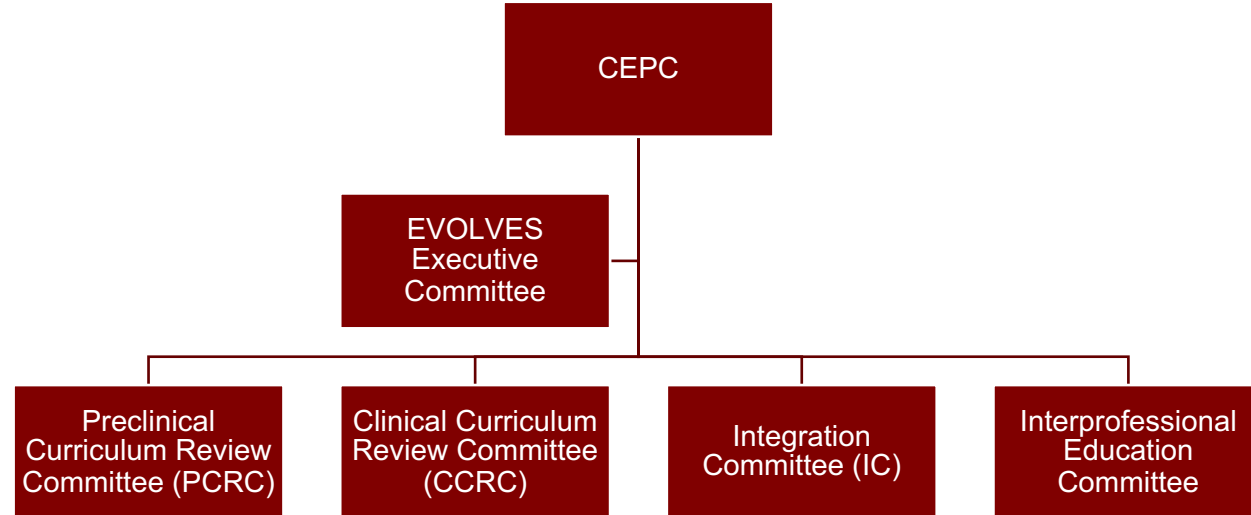
Plans for Today

- Value-added Roles/HECEA:
 - Cross-pollination between groups to identify opportunities for value-added roles with health equity/advocacy synergy
 - Generate list of roles/capacity models
- Educator Development:
 - Brainstorming topics of need for new curriculum for both faculty and peer educators
- Assessment/Remediation:
 - Meeting post-retreat
- Scholarship & Data Science/Curriculum Management:
 - Embedded into Phase 1 to discuss longitudinal content

What Comes Next...

- Reconvene at 11am with report out from the group leads on progress made
- Group work to include recommendations to be made to CEPC for future curricular planning
- **NOW** the real work begins!
 - Longitudinal small group work, especially amongst the Phase 1 cohort!
 - Plans for timeline for “reveal” under discussion

Curriculum and Educational Policy Committee (CEPC)



- Chair: Assoc. Dean for UME
- Chair, PCRC (Jason Poston)
- Chair, CCRC (Amber Pincavage)
- Pritzker Chiefs
- Tessa Balach (Ortho)
- Maureen Bederman (Surgery)
- Julie Chor (Ob/Gyn)
- Nicole Cipriani (Pathology)
- Veronica Cipriani (Neurology)
- Marcus Clark (MSTP)
- Chelsea Dorsey (Surgery)
- Barrett Fromme (Pediatrics)
- Dan Golden (Rad/Onc)
- Tia Kostas (Medicine)
- Wei Wei Lee (Medicine)
- Rakesh Navuluri (Radiology)
- Glenn Randal (Microbiology)
- Andrea Shogan (Surgery)
- Rich Silver (NorthShore)
- Scott Stern (Medicine)
- Darrell Waggoner (Pediatrics)
- Rachel Wolfson (Pediatrics)

Help us name the new curriculum!

Scan the QR code or go to

[Redcap.link/evolves](https://redcap.link/evolves)

Submissions accepted till the end of
November



Breakout Room Locations

- Phase 1 – stay in this room, side A
- Phase 2 – Room 400A
- Phase 3 – stay in this room, side B
- Educator Development – Room 500A
- HECEA/VAR – Room 400B